

# HOLLAND ROAD

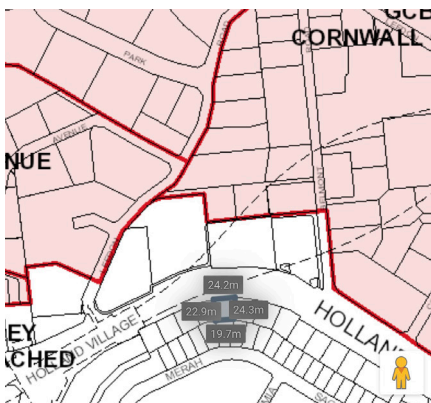
3.5 Storey + Mez +  
Attic Semi-Detached



Asking Price:

# \$7,680,000

Land Area: 2,593 sqft | Built Up: 5,700 sqft



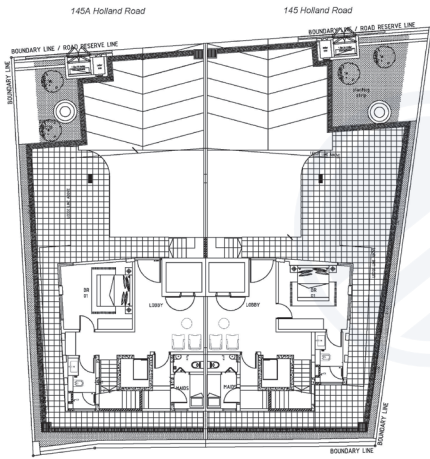
## Details

- District 10
- PSF: \$2,961.82
- 5+1 Bedrooms
- 5 Bathrooms
- Freehold
- Plot Width: 12.1m
- Plot Depth: 24.3m
- Main Gate Facing: North
- Carpark Lots: 4 Cars
- TOP: Feb 2024

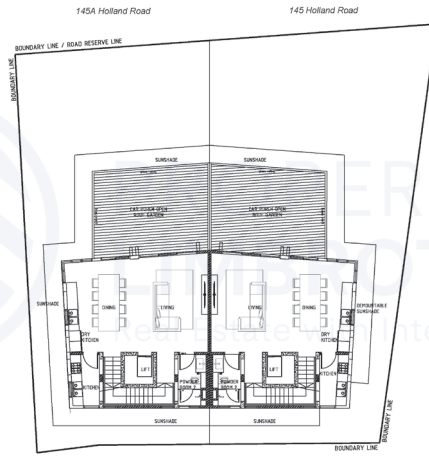
### Disclaimer:

The Developer, Vendor, Real Estate Salesperson or Estate Agency does not warrant, represent or undertake in any manner whatsoever the accuracy, correctness, adequacy, completeness or suitability of the information contained herein and hereby expressly disclaims liability for errors or omissions in such information. The information may not be relied upon as statements or representation of fact and they are not intended to form any part of any contract, including any contract for the rental or sale of any housing or commercial units. Visual representations such as pictures and drawings are artists' impressions only and are not representation of fact. All areas stated may be approximate and are subject to final survey. Items shown in the floor plans are only for reference and are not provided (unless otherwise stated). All information and asking prices are subject to such change at the sole discretion of the Developer, Vendor, Real Estate Salesperson or Estate Agency. All terms and conditions are subject to final contract.

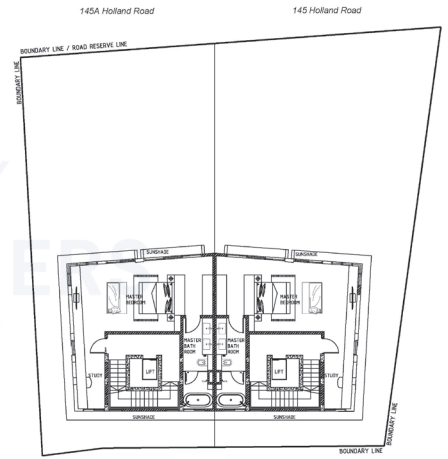
# FLOOR PLAN



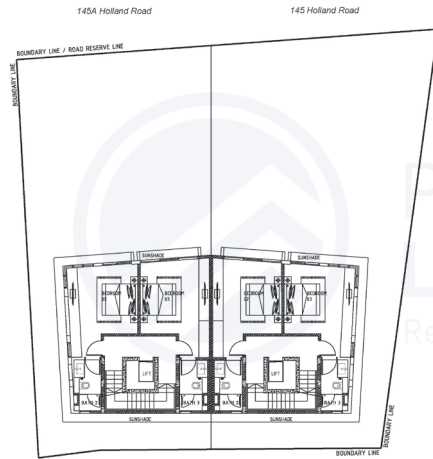
1st Storey



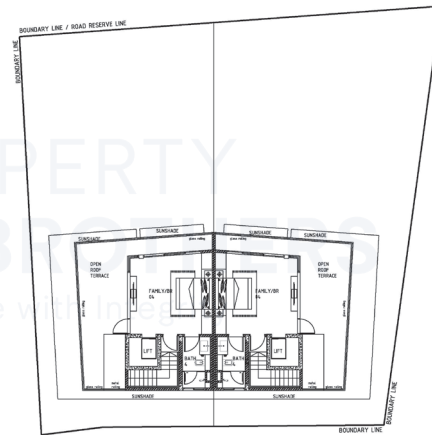
2nd Storey



Mezzanine



3rd Storey



Attic

@propertylimbrothers



SCAN TO  
ENQUIRE

